

## The Austral Group

Austral Refrigeration specialises in the design, manufacture, installation, and service of commercial refrigeration equipment and systems for supermarkets, convenience stores, and liquor stores in Australia, New Zealand, and the Asia Pacific region.

Austral designs and manufactures K-Series refrigerated display merchandisers and TechniDoors glass doors and inserts, specialised refrigeration systems. Austral maintains a standard product range but are also flexible in adapting our manufacturing processes to meet specific customer needs.

We are proud to supply equipment to major Australian and New Zealand retail companies such as Woolworths, Aldi, Coles, Bi-Lo, Franklins Liquorland, Metcash/IGA, BP, and Foodstuffs.



This next generation, energy-efficient range of merchandisers includes a wide range of multi-decks, Island and glass door freezers, and serviced display cases, designed for excellent product visibility, merchandising capacity, and aesthetic appearance.



Our experienced engineering and technical staff are capable of designing and installing refrigeration systems and components that are suitable to meet the most complex store requirements. Austral aims to provide the best design solution incorporating cost effective, energy efficient equipment to meet our customers' needs.



Austral provides a 24-hour breakdown service and comprehensive and preventative maintenance programs. Austral employs over 400 technicians, mechanics, engineers, and other dedicated staff (including over 50 apprentices) throughout Australia and New Zealand. We are proud to maintain the highest level of professionalism and knowledge in our industry through our apprenticeship program.

### NSW - HEAD OFFICE

66 Glendenning Road  
NSW 2761  
Tel: 02 8805 0400  
Fax: 02 9675 2897

### VIC

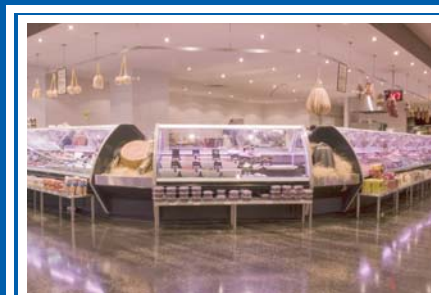
8/143-145 Canterbury Road  
Kilsyth VIC 3137  
Tel: 03 9761 7822  
Fax: 03 9761 5431

### QLD

1737 Beaudesert Road  
QLD 4110  
Tel: 07 3273 2977  
Fax: 07 3272 5755

### WA - QAL REFRIGERATION

36 Beringarra Ave  
WA 6090  
Tel: 08 9209 6111  
Fax: 08 9209 6122



[AustralGroup.com](http://AustralGroup.com)



BY 



Clearly the best display doors

## "ARDCO" WALK-THRU INSERT SIZES SINGLE OR DOUBLE ACTING



BY AUSTRAL REFRIGERATION

### NORMAL TEMPERATURE

Unheated Two-Pane Glass 50% \ Stainless Steel 50%		11 *INSERT OPENING	
MODEL NO. & DOOR SIZE	DOORS	HEIGHT	WIDTH
TA15\TA18	1	2000mm	800mm
Actual Door Size 1965mm x 759mm	2		1574mm
TA900 Single Acting	1	2140mm	941mm
Actual Door Size 2105mm x 900mm	2		1856mm
TA900 Double Acting	1	2140mm	941mm
Actual Door Size 2027mm x 900mm	2		1856mm

ALTERNATIVE GLASS TO PANEL ARE AVAILABLE UPON REQUEST.

### HEATED NORMAL TEMPERATURE

Heated Triple Glazed Gas Filled Safety Glass \ Stainless Steel Kickplate		11 *INSERT OPENING	
MODEL NO. & DOOR SIZE	DOORS	HEIGHT	WIDTH
TA115\TA18	1	2000mm	800mm
Actual Door Size 1965mm x 759mm	2		1574mm
TA900 Single Acting	1	2140mm	941mm
Actual Door Size 2105mm x 900mm	2		1856mm
TA900 Double Acting	1	2140mm	941mm
Actual Door Size 2027mm x 900mm	2		1856mm

To Calculate the "hole in the wall" size add 3mm to the height and 5mm to the width. Add a Further 47mm between adjacent frames for a supporting post.



## "ARDCO" INSERT ASSEMBLIES ELECTRICAL SPECIFICATIONS - POWER REQUIREMENTS

@ 240V 50Hz

### LIGHTING

AMPS PER LIGHT (58/65W)

### NORMAL TEMPERATURE INSERT - UNHEATED DOOR FRAMES & 2 PANE UNHEATED GLASS

MODEL	TOTAL HEATER AMPS (FRAME ONLY)
TA600 1525mm x 600mm	0.28 x Number of Doors
MID RANGE 1600mm x 750mm	0.3 x Number of Doors
TA18 1829mm x 750mm	0.4 x Number of Doors

### NORMAL TEMPERATURE INSERT - HEATED DOOR FRAMES & 2 PANE UNHEATED GLASS

MODEL	TOTAL HEATER AMPS (FRAME ONLY)
TA600 1525mm x 600mm	0.4 x Number of Doors
MID RANGE 1600mm x 750mm	0.5 x Number of Doors
TA18 1829mm x 750mm	0.6 x Number of Doors

### NORMAL TEMPERATURE INSERT - HEATED DOOR FRAMES AND 3 PANE HEATED GLASS

MODEL	TOTAL HEATER AMPS (FRAME ONLY)
TA600 1525mm x 600mm	0.7 x Number of Doors
MID RANGE 1600mm x 750mm	0.9 x Number of Doors
TA18 1829mm x 750mm	1.1 x Number of Doors

### LOW TEMPERATURE INSERT - HEATED DOOR FRAMES & 3 PANE HEATED GLASS

MODEL	TOTAL HEATER AMPS (FRAME ONLY)
TA600 1525mm x 600mm	0.9 x Number of Doors
MID RANGE 1600mm x 750mm	1.25 x Number of Doors
TA18 1829mm x 750mm	1.35 x Number of Doors

## DOOR AND INSERT SPECIFICATIONS

Glasspack Type	Room (Ambient) Temperature	Operating Temperature of the Case or Coolroom			
		-23° C	-12° C	-1° C	+4° C
HEATED	21° C	78%	92%	100%	100%
Triple Glazed	27° C	73%	86%	100%	100%
(Gas Filled - Toughened)	32° C	69%	80%	94%	100%
HEATED	21° C	61%	73%	87%	94%
Double Glazed	27° C	59%	69%	82%	88%
(Air Filled - Toughened)	32° C	56%	66%	78%	82%
PASSIVE	21° C			73%	79%
Triple Galzed	27° C			68%	73%
(Low "E" - Toughened)	32° C			64%	67%
PASSIVE	21° C			61%	70%
Double Glazed	27° C			56%	64%
(Annealed Flood Glass)	32° C			52%	58%

% Relative Humidity @ which Condensation forms on the glass

### REACH - IN INSERT DIMENSIONS

Door Type	Door Size mm (H x W)	Height	Insert Frame Dimensions (mm)*				
			Width - Number of Doors				
			1	2	3	4	5
TA7	715 x 595	752	636	1243	1850	2457	3116
TA14	1417 x 716	1454	757	1485	2213	2941	3669
TA15	1597 x 759	1634	800	1571	2342	3113	3884
TA16	1602 x 713	1639	754	1479	2204	2929	3654
TA17	1710 x 713	1747	754	1479	2204	2929	3654
TA18	1829 x 759	1866	800	1571	2342	3113	3884
TA600	1525 x 600	1562	641	1253	1865	2477	3089
TA636	1602 x 636	1639	677	1325	1973	2621	3269
TA900	1829 x 900	1866	941	1853	2765	3677	na

### WALK - THROUGH INSERT DIMENSIONS

Door Type	Door Size mm (H x W)	KickPlate H	Insert Frame Dimensions (mm)**			
			Single Acting		Double Acting	
			1 Door H x W	2 Door H x W	1 Door H x W	2 Door H x W
WSTA15	1965 x 759	334	2000 x 800	2000 x 1574		
WDTA15	1965 x 759	334			2078 x 831	2078 x 1620
WSTA18	1965 x 759	102	2000 x 800	2000 x 1574		
WDTA18	1965 x 759	102			2078 x 831	2078 x 1620
WSTA900	2105 x 900	242	2140 x 941	2140 x 1856		
WDTA900	2027 x 900	164			2140 x 972	2140 x 1902

\*\*Add 23mm to height and 47mm to width for flange tip to top dimensions

