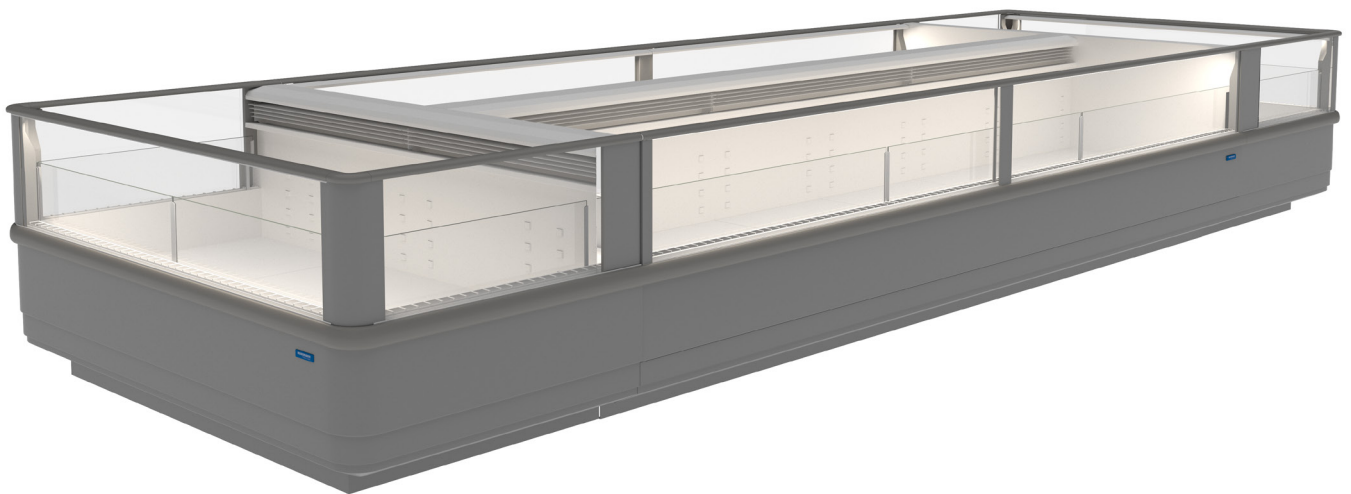


FROZEN FOOD

# GHN74

WIDE ISLAND FREEZER - CROWN END



ENHANCED ENERGY EFFICIENCY  
& VERSATILITY

**HUSSMANN®**

## PRODUCT BENEFITS

- Ergonomic design for easy access
- Increased internal volume with improved depth
- Optimised display with LED lighting
- Optional energy saving glass lid solutions
- Low Total Energy Consumption (TEC)
- Longer merchandise shelf life
- Product temperature compliance
- Simple to install and maintain
- Designed for modular configurations

## STANDARD FEATURES

- Internal and external powder coating
- Adjustable wire display racks
- Rubber bumper
- Galvanised base
- Evaporator assembly fitted with valve
- EC fan motors
- Digital thermometer display fitted
- Alarm probe fitted with conduit and draw wire

## CUSTOMISATIONS

### Shelving & Base Shelf

- One and two tier super structure

### Lighting

- LED lighting

### Ends

- Solid end
- Panoramic end
- Acrylic full height system divider

### Bumper

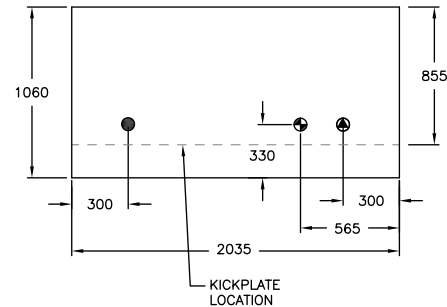
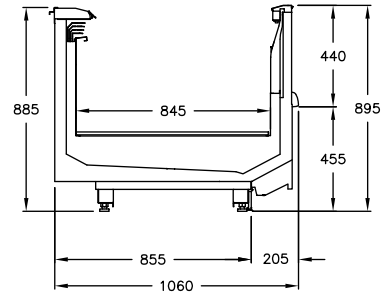
- Stainless steel bumper (single or double rail)

### Other

- Glass push pull lids
- Manual night blinds
- Price profile kit (includes 2 sided, 3 level)
- Ticket turret and A4 signs
- Stainless steel bumper
- Hot gas defrost
- Technology solutions
- Electronic shelf labels or video rail

### Energy & Sustainability

- Push pull lid assembly



## AVAILABLE LENGTHS

**Crown End:** 2035

## AVAILABLE DEPTHS

**GHN (Wide Island):** 2035

**GCN (Wall):** 1060

**TEMPERATURE CLASS**

**3L1**



(-18 °C to -15 °C)

## AVAILABLE COLOURS



### Additional Information

All Dimensions shown in Millimetres (mm) unless otherwise stated. Dimensions and features are subject to change. Please obtain current technical information prior to order confirmation.

**NOTE:** We reserve the right to change or revise specifications and product design in connection with any feature of our products. Such changes do not entitle the buyer to corresponding changes, improvements, additions or replacements for equipment previously sold or Shipped.

