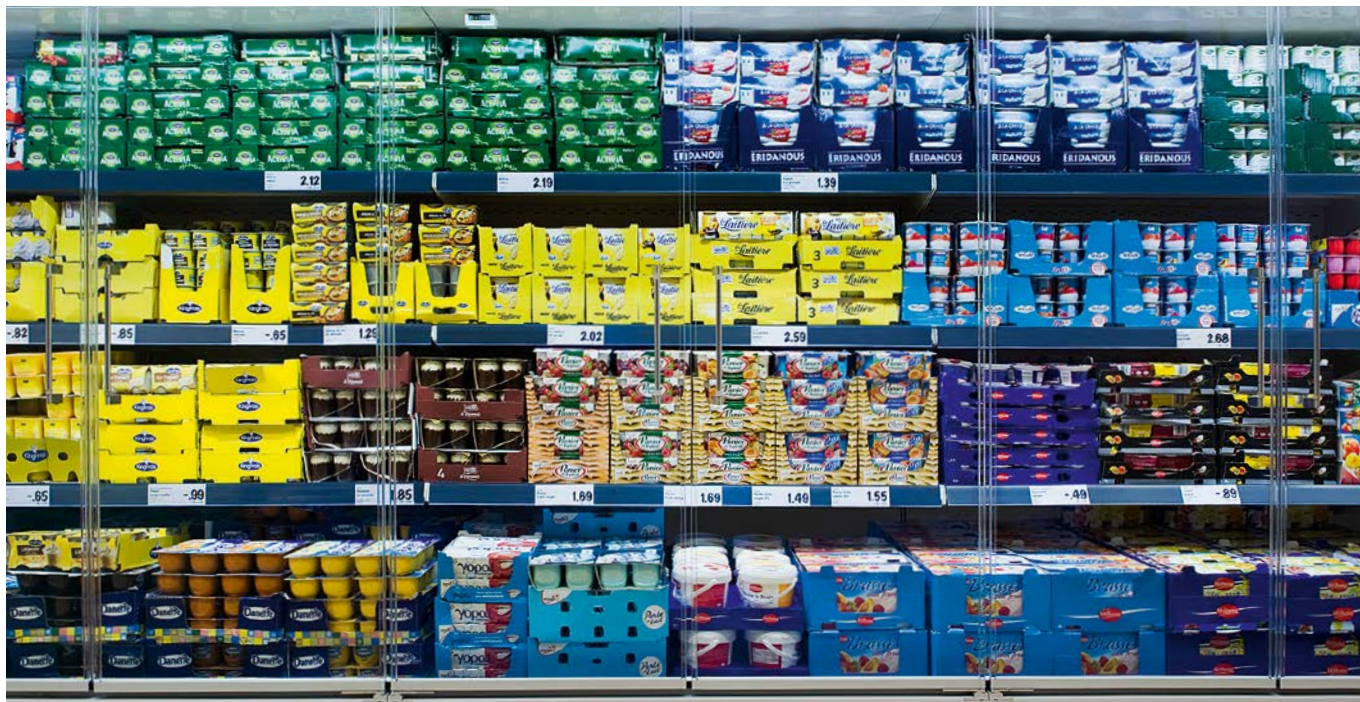


Top selling Food Presentation through the Power of full Visibility

SCHOTT Termofrost® Smart Look: 100% transparent door system



Food presentation visible at a glance

Product description

SCHOTT Termofrost® Smart Look transforms a refrigerated multideck cabinet into a display case that attracts the buyer's eyes. Food presentation is still perfectly visible when a cabinet is closed with double glazed doors, even at the vertical edges by using a transparent spacer. Cabinets equipped with these "invisible" doors enable easy selection for the customer at the point of sale and a fantastic view without disturbing optical distortion.

The best part is: the benefit of this door system can be used in all readily available cabinets.

Take advantage of the benefits

- Establish a fresh and clean look through perfect visibility
- Speed up orientation at the point of sale
- Provide a transparent shop design
- Close a cabinet and make a significant contribution to sustainability



Slim handles emphasise the crystal clear look

Technical Specifications

		SCHOTT Termofrost® Smart Look
Description	Type	Swing door
	Application	Refrigerated multideck cabinet
Typical system configuration	Doors /set	2 (1/3)
Glass	<ul style="list-style-type: none"> • Transparent design • Transparent design S* 	<ul style="list-style-type: none"> • Double glazing • Double glazing antireflective
	Coating	low-e
Standard Dimension (mm)	Height	1100 – 1900
	Width	1250
Handle		<ul style="list-style-type: none"> • Aluminum handle • Stainless steel with rubber bumper
Door opening features		<ul style="list-style-type: none"> • Self closing • Door stop • Hold open
Lighting options		<ul style="list-style-type: none"> • Shelf light • Canopy light • Vertical light holder
Energy savings	compared with open cabinets	up to 65 %
U-Value/sqmK	• Transparent design	1.1 W
	• Transparent design S*	1.6 W
Light Transmission	• Transparent design	80 %
	• Transparent design S*	92 %

SCHOTT Flat Glass CR, s.r.o.
 Zašovská 850
 Czech Republic
 CZ-757 01 Valašské Meziříčí
 Phone +420 571 68 6419
 Fax +420 571 68 6400
 info.flatglass@schott.com

www.schott.com/termofrost

SCHOTT
 glass made of ideas

High transparency for a large product display area

SCHOTT Termofrost® AGD 3: All glass door system for plus cooling



Perfect view for easy orientation at a multideck cabinet: SCHOTT Termofrost® T.AGD 3

Product description

SCHOTT Termofrost® AGD 3 is an energy free glass door system designed for the presentation of dairy products, fresh meat or beverages in refrigerated cabinets within food retail stores.

The system is recognised for its attractive appearance due to its all glass design and stability. The all glass door design offers visibility similar to open cabinets enabling a clear view of the products inside. The system is available in 2 options:

- SCHOTT Termofrost® AGD 3: conventional door design
- SCHOTT Termofrost® T.AGD 3: fully transparent design without visible vertical door profiles

The conventional door is designed with a slim vertical edge protection and the transparent design provides fully transparent vertical edges. The system requires minimal installation time as it consists of doors and frames that are delivered ready for installation.

Benefits from

- Clear and wide view to the inside of cabinets for a perfect merchandise presentation
- Energy savings of up to 65% compared with open multi-decks
- Retrofitting possible
- High stability glass doors



SCHOTT Termofrost® AGD 3

Technical Specifications

SCHOTT Termofrost® AGD 3		
Description	Type	Swing door system
	Application	Refrigerated multideck cabinet; plus cooling
Glass	Glazing	AGD 3 Conventional design: T.AGD 3 Transparent design:
		<ul style="list-style-type: none"> • Vertical edge with slim profile • transparent vertical edges
		<ul style="list-style-type: none"> • double glazing low emissivity glass; filled with inert gas • anti-reflective glass on request
Handle		Multiple options
Door opening features		<ul style="list-style-type: none"> • Hold open function • Self closing function • Door stop function
Lighting options		Several LED lighting options and fluorescent tubes
Energy savings	compared with open cabinets	up to 65 %
U-value (EN 673)		1.1 W/sqmK
Light transmission in %		80 %
Light reflections in %		13 %
Color		<ul style="list-style-type: none"> • RAL7035 light grey • RAL7024 graphite grey; • RAL9005 black

SCHOTT Flat Glass CR, s.r.o.
 Zašovská 850
 Czech Republic
 CZ-757 01 Valašské Meziříčí
 Phone +420 571 68 6419
 Fax +420 571 68 6400
 info.flatglass@schott.com

www.schott.com/termofrost

SCHOTT
 glass made of ideas