

HOT CASE

# MIC938

HEATED DISPLAY CABINET



\* Conditions Apply

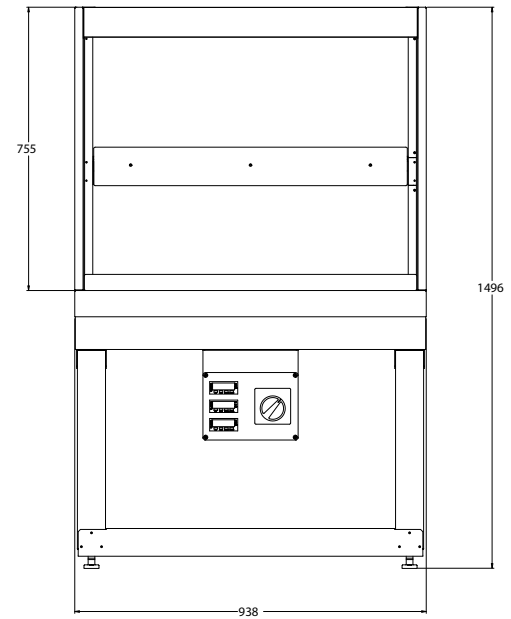
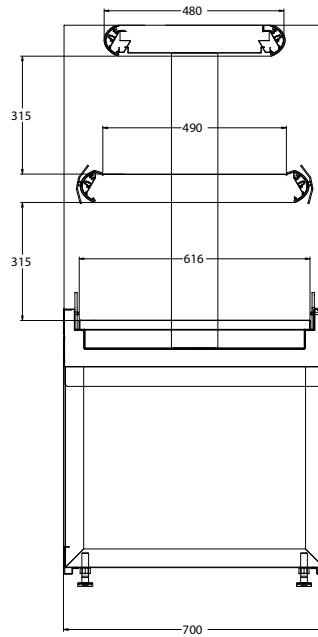
ENHANCED ENERGY EFFICIENCY  
& VERSATILITY

## PRODUCT BENEFITS

- Ergonomic design for easy access
- Multi level island cabinet
- Suitable for merchandising packaged hot food
- Low Total Energy Consumption (TEC)
- Product temperature compliance
- Simple to install and maintain

## STANDARD FEATURES

- Full stainless steel interior
- Painted upper canopy
- Electric box access via base
- Halogen lighting on canopy and middle shelf
- Radiant heat
- Poly carbonate & acrylic heat guards
- Fixed base – Exposed Frame ready for exterior treatment
- Power supply – Cable access via Base
- Rubber bumper
- Digital thermometer display fitted



## CUSTOMISATIONS

- Power supply – Cable access via Top Canopy
- Base Surround - Bespoke painted steel or wooden cladding options

### Additional Information

\* Standard cabinet excludes base surround

All Dimensions shown in Millimetres (mm) unless otherwise stated. Dimensions and features are subject to change. Please obtain current technical information prior to order confirmation.

**NOTE:** We reserve the right to change or revise specifications and product design in connection with any feature of our products. Such changes do not entitle the buyer to corresponding changes, improvements, additions or replacements for equipment previously sold or Shipped.

© 2021 Hussmann Corporation - Version - V.1.0

### AVAILABLE LENGTHS

**MIC938:** 938

### AVAILABLE DEPTHS

**MIC938:** 700

TEMPERATURE  
CLASS

HOT



(+65 °C to +80 °C)